

Consortium: Hanze University Groningen (NL) ; Ledovec, Plzen (CZ) ; AEIPS, Lisbon (PT) ; Student Welfare organization of Bergen SiB & NAV, Bergen (NO)

What is the ImpulSE project?



The main aim of the ImpulSE project (October 2013-December 2015) is the development of a toolkit for Supported Education services for students with psychiatric disabilities. The toolkit is aimed at students counselors, trainers, teachers and tutors, mental health professionals, and local authority officials involved in policymaking concerning people with psychiatric disabilities. The toolkit will be based upon needs- and resources assessments in the partner countries, as well as good practices from these. Secondly, a European Network of Supported Education (ENSEd) will be initiated, starting with a first International Conference on Supported Education.

Lisbon, November 2014



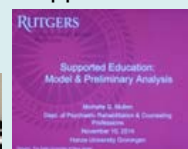
At the project meeting in November 2014 in Lisbon, Portugal, we finalized the first work package (needs and resources assessment) and started working on the second (development of the toolkit). Besides, our partner from Lisbon organized a symposium about SEd at the department of Psychology of the University in Lisbon, and an exchange meeting with students with psychiatric disabilities and their families at the community center of AIEPS.

What has been done so far?

In the past year, a needs and resources assessment has been carried out in the four countries. To identify barriers and facilitators that students with a psychiatric disorder perceive when going (back) to school, we used three types of research: focus group interviews with (aspirant) students with psychiatric disabilities; interviews with experts from educational and mental health organizations; and a review of the literature on barriers and effective adjustments in educational settings.

Symposium, November 2014

Related to the ImpulSE-project, on November 11th the symposium *Participation through education for youth with psychiatric disabilities* took place at the Hanze University in Groningen, the Netherlands. More than 140 students, clients, family members, teachers and mental health professionals attended this symposium. Key note speaker was Michelle G. Mullen, Assistant Professor at the Rutgers University, New Jersey. Prior to the symposium, she gave a master class about Supported Education (SEd) in the USA to researchers, teachers and mental health professionals in the area of SEd. In her key note speech she addressed her research on various positive effects of SEd and several smart applications to support students with psychiatric disabilities.



Plzen, May 2014



In May 2014 we had a project meeting in Plzen, Czech Republic, where we've discussed our findings and finalized this part of the project. Also, an exchange meeting was organized by partner Ledovec for organizations in the Czech Republic that also work in the area of Supported Education.

Next, the four partners have developed a **social map** of existing adjustments and resources and current policies regarding educational opportunities for people with mental health disabilities in their region and/ or country. Based on this social map, each partner described a **good practice**.

Become a member of ENSEd!

The aim of the European Network on Supported Education (ENSEd) is to raise awareness about the educational needs of young adults/students with psychiatric disabilities and for existing support services. Interested in becoming a member? Visit www.supportededucation.eu

Pre-announcement of 1st SEd Conference

Save the dates: on November 16th and 17th 2015 the **first European conference on Supported Education** will be organized in the Netherlands. More info: www.supportededucation.eu