



# AEIPS

## The impact of Supported Education in Community Integration: Participant's personal stories

### WORKSHOP:

Luis Sá-Fernandes  
17th November 2015  
Groningen



## Overview of Workshop

1. AEIPS
2. Supported Education Program
3. Community Integration
4. Interview
5. Students Perspectives:
  1. Presentation and past experience
  2. Motivations
  3. Access to Resources
  4. Social Role
  5. Support
  6. Gains
6. Conclusion
7. Questions

## AEIPS

- The Association for the Study and Psychosocial Integration (AEIPS)
- Community-based Mental health Organization created in 1987 by a group of professionals, families and people with mental illness

### Mission

*Promote recovery and Community integration of people with mental illness experience through processes of empowerment and social participation"*

## Supported Education Program

- To support people with mental illness to increase their education levels and have access to regular schools

### Outside School:

- organizing time and study methods
- providing resources (study rooms, internet, computers)
- use of community resources (libraries, conferences)
- students support group :
  - Peer and professional support

### At School:

- support for enrollment
- financial aid
- use school resources (library, cafeteria, academic tutor)
- negotiate the necessary accommodations

## Community Integration

- Community integration is the opportunity to live in the community and be valued for one's uniqueness and abilities, like every one else.
- Community Integration should result in community presence and participation.

Salzer & Baron (2006)

## Community Integration

### Multidimensional concept:

- Physical Integration: Access to resources and community activities
- Social Integration: mainstreamed and diversified interactions
- Psychological Integration: sense of community belonging

**Social Role:**  
Access to  
valued  
social roles

Ahern & Fisher, 2002; Chamberlin & Rogers, 1990; Revall et al. 2000; Ridgway, 2007; Aubry et al. 2013; Torrey et al. 1995; Unger et al. 2000

## Interview

1. Name, age and school ?
2. Personal past experience before returning or going to school ?
3. Why did you go back to school ?
4. Which school resources did you use ?
5. Do people see you different because you are at school ?
6. What support did you received for your educational project ?
7. What did you gain from studying ?

Based on CIS - PT (Community Integration Scale), CIQ (Community Integration Questionnaire), TUCP (Temple University Community Participation Measure)

## Presentations & Past Experience

## Presentations & Past Experience

- Long time before going back to school
- Mental illness experience



## Motivations



## Motivations

- Different motivations, different needs
- Choice
- Individual goals
- Individualization value
- 1 person = 1 School



## Access to Resources

- Resources Movie



## Access to Resources

- Access to different settings
- School Resources and community resources
- Social diversified relations
- What is common ?
  - The same interests
  - Similar needs

## Valued Social Role

- Social role Movie

## Valued Social Role

- Change in other people and self perspective
- Increase in self believe
- Optimism over the future
- Acceptance
- Different role (Student)
- Not a “poor thing”
- Capacities

## Support

- Support movie

## Support

- Support defined by students
- Support according to different students needs
- On site and mobile support
- Professional and peer support



## Gains

- Gains movie

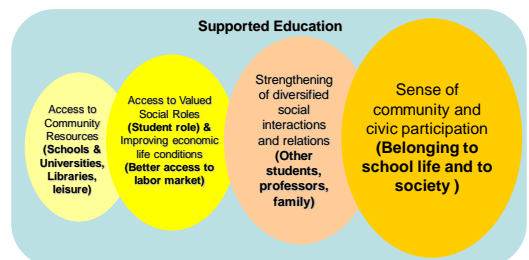


## Gains

- Better access to labor market
- Increase the educational level
- Increase of self confidence and self believe
- Sense of belonging to society
- Psychological betterment thought studying



## Supported Education & Community Integration



Nelson, Kloos & Ornelas, 2014; Salzer & Baron, 2006; Ahem & Fisher, 2002; Chamberlin & Rogers, 1990; Revell et al., 2000; Ridgway, 2007; Aubry et al., 2013; Torrey et al., 1995; Unger et al., 2000; Wong & Solomon, 2002

## The End

**Contacts:**

AEIPS  
Av. António José de Almeida, 26 - 1000-043 Lisboa  
Tel.:218 453 580

Luis Sá-Fernandes

[luis.sa.fernandes@aeips.pt](mailto:luis.sa.fernandes@aeips.pt)

[www.aeips.pt](http://www.aeips.pt)

- Questions?
- Comments

